

GILWELL PARK

Two sets of pyjamas or nightdresses

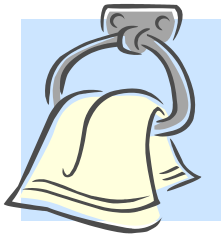
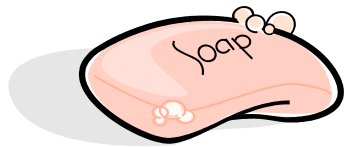
Things to take on school journey:



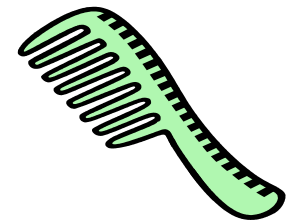
Two towels



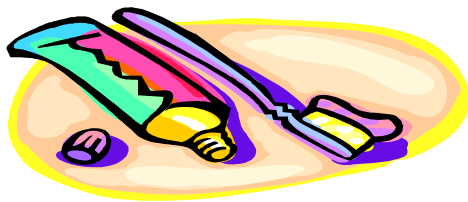
Soap and flannel



Brush or comb



Toothbrush and toothpaste



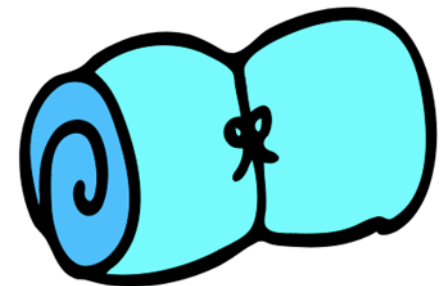
Vests and pants or knickers



Tissues



Sleeping bag



If you would like to borrow a school sleeping bag then please let the office know

Two sets of top old clothing



Four pairs of socks



Boots or shoes for rough walking boots



One pair of thick socks for wellington boots



A warm hat and gloves



Indoor shoes



A warm coat or jacket